



Mrs J Nolan
Clerk to the Council

The Parish Council Community Centre
Bell Lane, Ackworth
Pontefract, WF7 7JH

Tel: 01977 611583

E-mail: clerk@ackworthparishcouncil.gov.uk

11 July 2024

Sent via email to [@gmail.com](#)

Dear

Freedom of Information Request – Low Ackworth Playground Gate

I write in response to your Freedom of Information request dated Wednesday 29th May, received Thursday 30th May 2024, as detailed below.

1. Can you please inform me who is responsible for installing the McAlpine one and a half inch bath plug instead of the correct gate rubber buffer?
2. Who authorised the installation of the McAlpine Rubber bath plug?
3. Under the freedom of information can I please have a copy of the annual Health and Safety Report which was undertaken in December 2023?
4. Can I have a copy of the latest annual Health and Safety Report that was carried out most recently.

As advised on the 30th May 2024, the information requested relates to Human Health and Safety and therefore Ackworth Parish Council applied their right to extend the response from 20 to 40 working days which we exercised.

We would also like to note that where requests for freedom of information are made, legally we are required to respond with what's held on written record. Some of the questions you have asked, fall outside of what would be recorded and this is the reason you were invited to attend the office to discuss further which was declined.

Please find below information as per your request.

1. Can you please inform me who is responsible for installing the McAlpine one and a half inch bath plug instead of the correct gate rubber buffer?

This information is not held on written record. Emergency works are instructed by me the Clerk. Reason for installation has been verbally discussed in an official capacity which you are aware of.

2. Who authorised the installation of the McAlpine Rubber bath plug?

This information is not held on written record. Emergency works are instructed by me the Clerk. Reason for installation has been verbally discussed in an official capacity which you are aware of.

3. Under the freedom of information can I please have a copy of the annual Health and Safety Report which was undertaken in December 2023?

As attached – Please note the 2024 report now supersedes this report.

4. Can I have a copy of the latest annual Health and Safety Report that was carried out most recently.

An additional inspection was carried out in April 2024 due to concerns regarding suspected vandalism across our sites. Currently the reports are still live, and any remedial action is currently in progress.

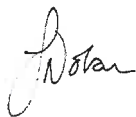
Therefore, under exemption 'Section 38 – Endangering Health and Safety' we will not be releasing this document at this time for public circulation until all remedial action completed.

As you have received this report now in an official capacity, we would remind you that the information you are privy to is in the capacity as a Councillor to Ackworth Parish Council. For this reason, we will not be revisiting this FOI request to supply the requested report once remedial work completed as a copy is within your possession.

If you are unhappy with the way your request for information has been handled, you have a right to appeal to the Information Commissioner by phone 0303 123 1113 or website <https://ico.org.uk/>

There is no charge for making this request.

Yours sincerely



Jemma Nolan
Clerk to the Council



BELL LANE



Site address:-

Bell Lane, Ackworth, Pontefract, West Yorkshire

Date of inspection:-

7/12/2023

Inspected by:

**Gary Watkinson
RPii Certificate No 1041A**



1. Lightmain Teen Shelter

Condition: No defects were found

Surfacing: Grass

Surface Condition: Worn

Low Risk: 6



BELL LANE

2. Lightmain Multi-use Games Area

Condition: Slight damage to one mesh panel – monitor
Slight fire-damage to one panel – monitor

Compliance: Complies with BS EN 15312

Surfacing: Tarmac

Surface Condition: Satisfactory

Medium Risk: 8



(Slight damage to mesh panel – library photo)



(Slight fire-damage to panel)

Ancillary items/Comments

- No seats provided
- No litter bins provided
- Sign satisfactory (**Very Low Risk**)
- No fence provided
- No path provided
- General area – good condition. Tidy

MEDIUM RISK SITE



CARR BRIDGE PLAYING FIELD



Site address:-

Mill Lane, Ackworth, Pontefract, West Yorkshire

Date of inspection:-

7/12/2023

Inspected by:

Gary Watkinson
RPii Certificate No 1041A



1. Sutcliffe Rota item

Condition: No defects were found

Compliance: Complies with BS EN 1176

Surfacing: Grass Mats

Surface Condition: Satisfactory

Surface Compliance: Meets the dimensional requirements of BS EN 1176

Low Risk: 4



2. Sutcliffe Stand-on Seesaw

Condition: Excessive movement in foundations – requires attention

Compliance: Complies with BS EN 1176

Surfacing: Grass Mats

Surface Condition: Satisfactory

Surface Compliance: Meets the dimensional requirements of BS EN 1176

Low Risk: 6



CARR BRIDGE PLAYING FIELD

3. Sutcliffe Tube Slide

Condition: No defects were found

Compliance: BS EN 1176-1, Sec. 4.2.7.5, potential foot trap between platform & top of incline climber

Surfacing: Grass Mats

Surface Condition: Satisfactory

Surface Compliance: Meets the dimensional requirements of BS EN 1176

Low Risk: 7



(Potential foot trap – library photo)

4. Sutcliffe Group Swing

Condition: No defects were found

Compliance: BS EN 1176-1, Sec. 4.2.7.6, potential finger trap between plastic links on basket

Surfacing: Grass Mats

Surface Condition: Grass worn (this may affect the impact attenuating properties of the mats)

Surface Compliance: Meets the dimensional requirements of BS EN 1176

Low Risk: 7



(Potential finger trap – library photo)

CARR BRIDGE PLAYING FIELD

5. Sutcliffe Balance Beam

Condition: No defects were found

Compliance: Complies with BS EN 1176

Surfacing: Grass Mats

Surface Condition: Satisfactory

Surface Compliance: Meets the requirements of BS EN 1176

Very Low Risk: 2



6. Sutcliffe Spring Car

Condition: No defects were found

Compliance: Complies with BS EN 1176

Surfacing: Green Fleck Wet Pour

Surface Condition: Satisfactory

Surface Compliance: Meets the requirements of BS EN 1176

Very Low Risk: 2



7. Sutcliffe Spring Seesaw

Condition: No defects were found

Compliance: Complies with BS EN 1176

Surfacing: Green Fleck Wet Pour

Surface Condition: Satisfactory

Surface Compliance: Meets the requirements of BS EN 1176

Very Low Risk: 2



8. Sutcliffe Toddler Multi Unit

Condition: Centre disc on play panel missing – monitor

Compliance: Complies with BS EN 1176

Surfacing: Green Fleck Wet Pour

Surface Condition: Satisfactory

Surface Compliance: Meets the dimensional requirements of BS EN 1176

Low Risk: 4



CARR BRIDGE PLAYING FIELD

9. Sutcliffe 1.94m 1 Bay Swing with 2 Cradle Seats

Condition: No defects were found

Compliance: Complies with BS EN 1176

Surfacing: Green Fleck Wet Pour

Surface Condition: Satisfactory

Surface Compliance: Meets the dimensional requirements of BS EN 1176

Very Low Risk: 2



10. Sutcliffe Roundabout

Condition: No defects were found

Compliance: BS EN 1176-1, Sec. 4.2.7.2, potential head trap between frame & platform

Surfacing: Green Fleck Wet Pour

Surface Condition: Satisfactory

Surface Compliance: Meets the dimensional requirements of BS EN 1176

Low Risk: 5



(Potential head trap – library photo)



(Potential head trap)

CARR BRIDGE PLAYING FIELD

11. Sutcliffe Junior Multi Unit

Condition: Replace missing bolt on side of platform

Compliance: BS EN 1176-1, Sec. 4.2.7.6, potential finger traps at holes on platform where bolts missing

Surfacing: Black Wet Pour with Inserts

Surface Condition: Satisfactory

Surface Compliance: Meets the dimensional requirements of BS EN 1176

Medium Risk: 12



(Potential finger trap at missing bolt)

12. Sutcliffe Six Step Posts

Condition: No defects were found

Compliance: Comply with BS EN 1176

Surfacing: Black Wet Pour with Inserts

Surface Condition: Satisfactory

Surface Compliance: Meets the requirements of BS EN 1176

Very Low Risk: 2



13. Sutcliffe Rota item

Condition: No defects were found

Compliance: Complies with BS EN 1176

Surfacing: Black & Green Wet Pour

Surface Condition: Satisfactory

Surface Compliance: Meets the dimensional requirements of BS EN 1176

Low Risk: 4



CARR BRIDGE PLAYING FIELD

14. Bespoke Traverse Wall

Condition: Slight rotting of logs – monitor
Resecure two loose foot holds

Compliance: Complies with BS EN 1176

Surfacing: Black Wet Pour

Surface Condition: Satisfactory

Surface Compliance: Meets the requirements of BS EN 1176

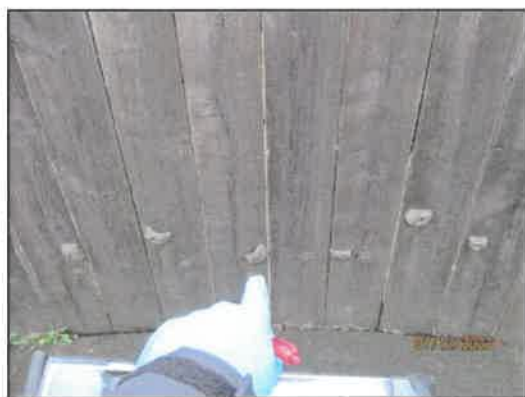
Low Risk: 4



(Rotting log)



(Rotting log)



(Loose foot hold)



(Loose foot hold)

15. Unknown Make One 5-a-side Goal

Condition: No defects were found

Compliance: Complies with BS EN 15312

Surfacing: Grass

Surface Condition: Worn – monitor

Glass present in goal – remove

Medium Risk: 8



CARR BRIDGE PLAYING FIELD

Ancillary items/Comments

- Seats x three – within 1m of fence (**Low Risk**)
- Litter Bin x one satisfactory (**Very Low Risk**)
- Sign satisfactory (**Very Low Risk**)
- Fence (around items 6-14 only) – potential neck trap at bow tops & seat within 1m (**Medium Risk**) Anti-sag bars not fitted – monitor
- Pedestrian Gate x one – clearance of between 60mm & 110mm should be maintained at bottom of gate (actually 45mm). Slight distortion of gate – requires attention. (**Low Risk**) Re-adjust self-closing device as gate closing too fast (closing in 3.5 seconds, should be at least 5 seconds) (**Medium Risk**)
- Only one pedestrian entrance (**Medium Risk**)
- Path satisfactory (**Very Low Risk**)
- General area – good condition. Tidy

MEDIUM RISK SITE



LOW ACKWORTH PLAYING FIELD



Site address:-

Station Road, Low Ackworth, Pontefract, West Yorkshire

Date of inspection:-

7/12/2023

Inspected by:

**Gary Watkinson
RPii Certificate No 1041A**



1. Eibe Spring Ram

Condition: No defects were found

Compliance: Complies with BS EN 1176

Surfacing: Black Wet Pour with Insert

Surface Condition: Satisfactory

Surface Compliance: Meets the requirements of BS EN 1176

Very Low Risk: 2



2. Norleg Seesaw with Tyre Stops

Condition: No defects were found

Compliance: Complies with BS EN 1176

Surfacing: Black Wet Pour with Inserts

Surface Condition: Satisfactory

Surface Compliance: Meets the dimensional requirements of BS EN 1176

Low Risk: 4



LOW ACKWORTH PLAYING FIELD

3. Handmade Places Dragonfly

Condition: No defects were found

Compliance: Complies with BS EN 1176

Surfacing: Grass

Surface Condition: Satisfactory

Very Low Risk: 2



4. Handmade Places Snail

Condition: Hand holds missing – monitor

Compliance: Complies with BS EN 1176

Surfacing: Grass

Surface Condition: Showing signs of wear

Very Low Risk: 2



5. Wicksteed 2.35m 1 Bay Swing with 2 Flat Seats & Son.X Audio Blocks fitted to Chains

Condition: No defects were found

Compliance: Complies with BS EN 1176

Surfacing: Black Wet Pour with Inserts

Surface Condition: Satisfactory

Surface Compliance: Meets the dimensional requirements of BS EN 1176

Low Risk: 4



6. Norleg Multi Climbing Frame

Condition: Small splits in logs – monitor

Compliance: Complies with BS EN 1176

Surfacing: Grass Mats

Surface Condition: Satisfactory

Surface Compliance: Meets the dimensional requirements of BS EN 1176

Low Risk: 7



LOW ACKWORTH PLAYING FIELD

7. Norleg Four-item Trim Trail consisting of:

- a) Rope Walk
- b) Bridge
- c) Step Post
- d) Wobble Log

Condition: Small splits in logs – monitor

Compliance: Complies with BS EN 1176

Surfacing: Grass Mats

Surface Condition: Satisfactory

Surface Compliance: Meets the dimensional requirements of BS EN 1176

Low Risk: 4



8. Wicksteed Junior Multi Unit

Condition: No defects were found

Compliance: Complies with BS EN 1176

Surfacing: Black Wet Pour with Inserts

Surface Condition: Satisfactory

Surface Compliance: Meets the dimensional requirements of BS EN 1176

Low Risk: 7



9. Wicksteed 1.77m 1 Bay Swing with 1 Cradle Seat

Condition: No defects were found

Compliance: Complies with BS EN 1176

Surfacing: Black Wet Pour

Surface Condition: Satisfactory

Surface Compliance: Meets the dimensional requirements of BS EN 1176

Very Low Risk: 2

